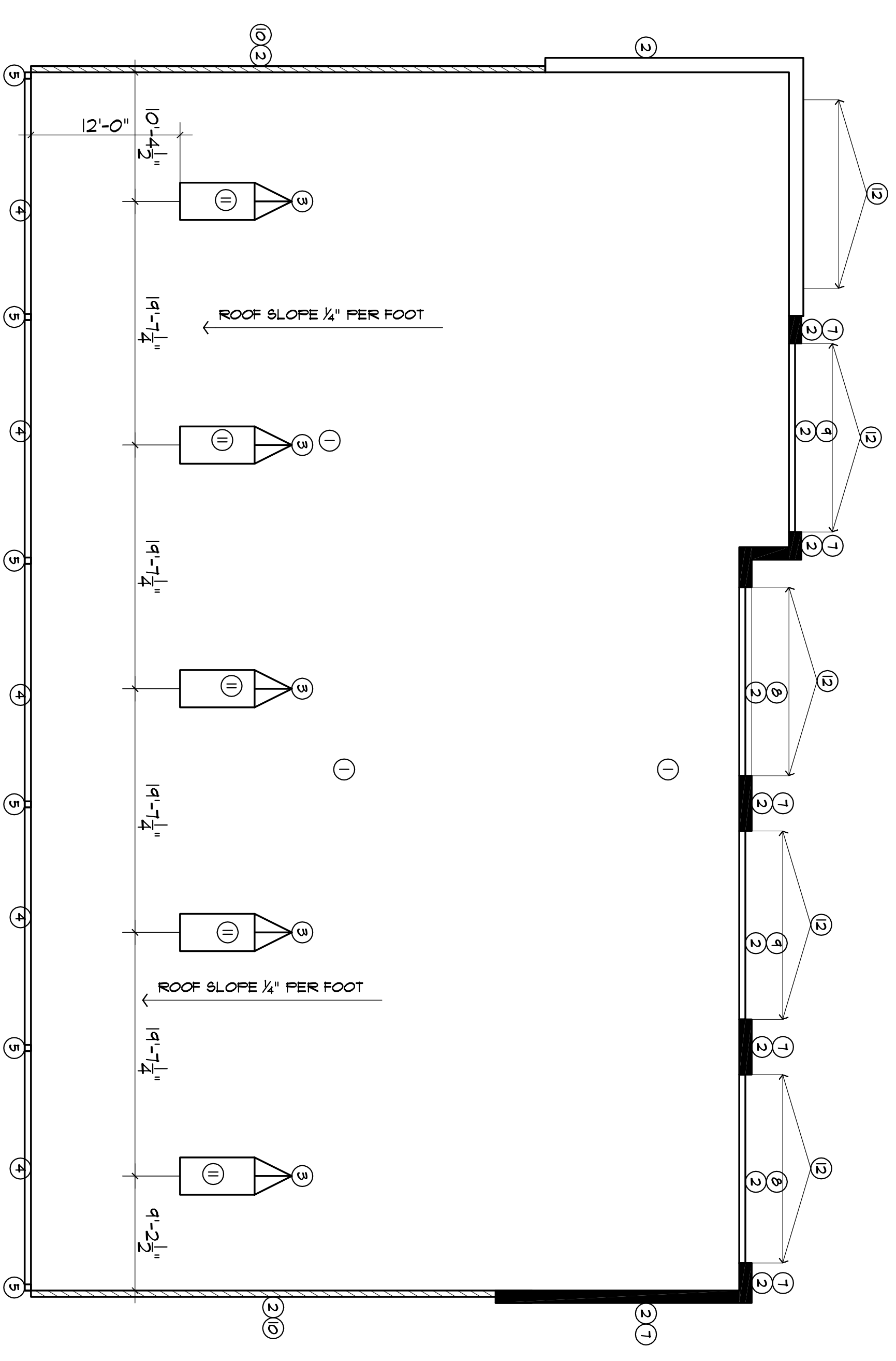


**01 floor plan** THIS IS A SHELL STRUCTURE (WHITE BOX)  
SCALE: 1/8" = 1'-0"



**02 roof plan**  
SCALE: 1/8" = 1'-0"

**FLOOR PLAN LEGEND**

- 1 NEW EXTERIOR WALL CONSTRUCTION- 4" MASONRY ON 1/2" EXTERIOR SHEATHING ON 2X6 WOOD STUDS @ 16" O.C.
- 2 NEW EXTERIOR WALL CONSTRUCTION- THINSET LESTERONE, IN RANDOM ASHLAR PATTERN ON GALV. STEEL WESH ON 1/2 LB BUILDING FELT ON 1/2" EXTERIOR SHEATHING ON 2X6 WOOD STUDS @ 16" O.C.

**KEY NOTES**

- 1 4" FACE BRICK TO MATCH ADJACENT SCHOOL.
- 2 4" LESTERONE IN RANDOM ASHLAR PATTERN TO MATCH ADJACENT SCHOOL.
- 3 STRUCT. STEEL COLUMN.
- 4 CONCRETE WALK WITH 2% GROSS SLOPE MAX.
- 5 ROCK SALT FINISH AT CONCRETE WALLS.
- 6 FINISHING ACCESS.
- 7 1/4" X 1/4" SAWCUT JOINT.

**WINDOW LEGEND**

- 1 1" TINTED INSULATED GLAZING IN CLEAR ANODIZED ALUMINUM VERTICAL SLIT STOREFRONT OVERALL DIMENSIONS OF STOREFRONT SYSTEM IS 15'-2" X 4'-0"

**DOOR LEGEND**

- A 3'-0" X 7'-0" STOREFRONT DOOR, 1" TINTED INSULATED GLAZING IN CLEAR ANODIZED STOREFRONT GLAZING SYSTEM, DOOR HARDWARE- THREE HINGES (NRP), ACCESSIBLE CLOSER, WEATHERSTRIPPING, THRESHOLD, BUILDING ENTRY LOCKSET WITH LEVER BOTH SIDES.
- B 3'-0" X 7'-0" INSULATED HOLLOW METAL DOOR (FLUSH PANEL) IN INSULATED HOLLOW METAL DOOR HARDWARE- THREE HINGES (NRP), ACCESSIBLE CLOSER, WEATHERSTRIPPING, VINYL DOOR BOTTOM, ACCESSIBLE THRESHOLD, RAIN GUARD, BUILDING ENTRY LOCKSET WITH LEVER BOTH SIDES.

**ROOF PLAN GENERAL NOTES**

- 1 ROOF SYSTEM AND SUPPORT TO MEET U.L. 90 WIND UPLIFT DESIGN CRITERIA
- 2 VERIFY MEP ROOF PENETRATIONS- QUANTITIES AND LOCATIONS WITH MEP DRAWINGS
- 3 ALL ROOF CURBS/ ROOF JACKS REQUIRED STRUCTURAL COMPONENTS AND FLASHING STAINLESS STEEL, BUT REQUIRED FOR A WEATHERTIGHT INSTALLATION
- 4 ALL FLASHING AND COUNTER FLASHING SHALL BE 26 GA. GALV. STEEL

**ROOF PLAN KEY NOTES**

- 1 TPO ROOFING SYSTEM, 15 YEAR WARRANTY, ON EXTERIOR
- 2 26 GA. GALV. STEEL COPING
- 3 CRICKET
- 4 6" X 6" ALUMI. GUTTERS, CLEAR FINISH
- 5 6" X 6" ALUMI. DOWNSPOUTS, CLEAR FINISH
- 6 PARAPET TOP OF PLATE ELEVATION 21'-2"
- 7 PARAPET TOP OF PLATE ELEVATION 18'-2"
- 8 PARAPET TOP OF PLATE ELEVATION 20'-2"
- 9 PARAPET TOP OF PLATE ELEVATION 19'-2"
- 10 PARAPET TOP OF PLATE ELEVATION 11'-5"
- 11 36" X 12" MANUFACTURED ROOF CURB WITH 26 GA. GALV. STEEL CAP FOR FUTURE INSTALLATION OF ROOF TOP UNITS. EACH ROOF TOP UNIT IS ESTIMATED TO WEIGH 500 LBS.
- 12 CANVAS COVER OVER 1" SQUARE STEEL RAINING FRAME. PATTERN OF CANVAS TO BE SELECTED BY OWNER

**AP architects**  
architecture  
planning

project management  
1016 State Highway 46 East  
Boerne, Texas 78006  
www.aparchitects.weebly.com  
210 . 781 . 3405

Alvin G. Peters, Architect #15199

AP Architects, All Rights Reserved. This drawing and its reproductions are the property of AP Architects and may not be reproduced, published, or used in any way without the written permission of AP Architects.

REGISTERED ARCHITECT  
ALVIN G. PETERS  
NO. 15199  
STATE OF TEXAS  
EXPIRES 08/31/2018

*Alvin G. Peters*  
07.10.2017

plan review

**Pinnacle**  
**Montessori**  
of  
**Forney**

Lot 3, Block A,  
Ridgecrest Center  
Addition  
City of Forney  
Kaufman County, Texas

REVISIONS: \_\_\_\_\_ DATE \_\_\_\_\_

PROJECT No: 201708  
DATE: 07/10/17  
SHEET: \_\_\_\_\_ OF \_\_\_\_\_

MERCANTILE BUILDING  
FLOOR PLAN and ROOF PLAN

**A2.1**