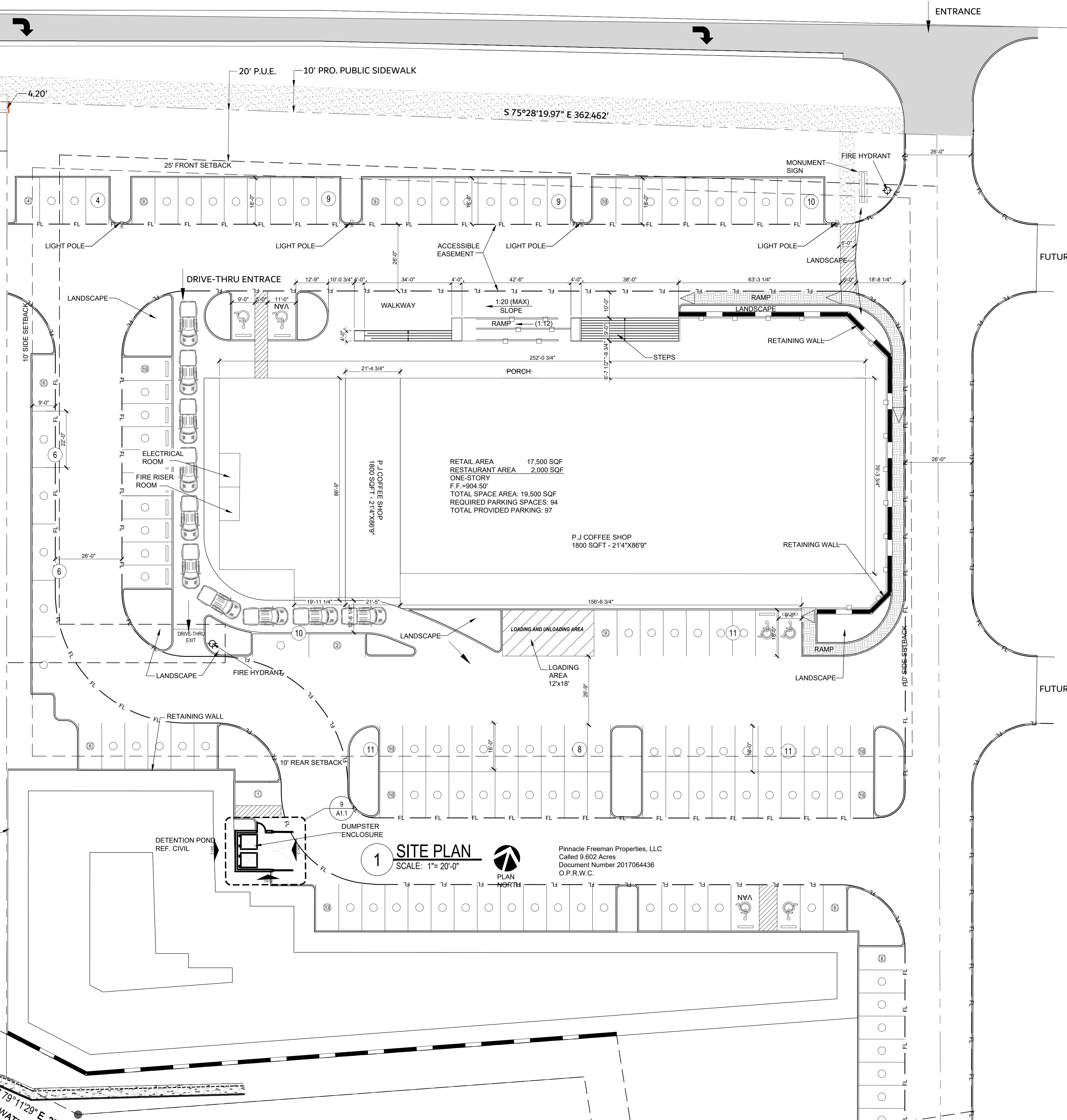


- NOTES:
- REF: CIVIL DRAWINGS FOR ALL SITE CONSTRUCTION INFORMATION INCLUDING, BUT NOT LIMITED TO THE FOLLOWING:
 - SITE GEOMETRY AND DIMENSIONAL CONTROL
 - SITE UTILITIES
 - SITE GRADING AND DRAINAGE
 - ASPHALT/CONCRETE PAVING DETAILS
 - PAVING MARKERS
 - CONCRETE SIDEWALK, CURB, AND GUTTER DETAILS
 - PARKING BUMPERS
 - TRAFFIC SIGNAGE
 - PAVING STRIPPING AND CURB MARKINGS
 - TYPICAL HO SIGNAGE / SPACES
 - RETAINING WALL & SCREEN WALL
 - WALKWAY STEPS & RAMPS
 - REF: ELECTRICAL DRAWINGS FOR SITE INFORMATION INCLUDING REG: BUT NOT LIMITED TO THE FOLLOWING:
 - SITE LIGHT STANDARD LOCATIONS AND SIZES
 - ELECTRICAL SLEEVING LOCATIONS AND SIZES
 - TELEPHONE AND CABLE T.V. PULL BOX LOCATIONS
 - ELECTRICAL MANHOLE LOCATIONS AND DETAILS
 - PULL BOX LOCATIONS AND SIZES FOR VARIOUS SITE
 - LIGHTING ELEMENTS
 - EXTERIOR BUILDING ILLUMINATION AND UTILITY COORDINATION
 - REF: LANDSCAPE DRAWINGS FOR:
 - LANDSCAPE PLANTING DETAILS
 - SODDING AND SEEDING
 - LANDSCAPE BED DRAINAGE
 - HARDSCAPE LAYOUT AND DETAILS (SPECIALTY PAVING)
 - REF: IRRIGATION IN LANDSCAPE DRAWINGS FOR:
 - HEAD AND VALVE LOCATIONS AND SIZES
 - IRRIGATION SLEEVING LOCATIONS AND SIZES
 - IRRIGATION SYSTEM CONTROLLER LOCATION
 - DETAILS AND SPECIFICATIONS
 - ADA / TAS COMPLIANCE: ADA ROUTES FROM BUILDING TO SIDEWALK WITHIN PUBLIC RIGHTS - OF -WAY SHALL MEET ADA / TAS REQUIREMENTS. REFER CIVIL
 - STEPS - 4"-7" RISES, 11" MIN TREAD.
 - RAMP - (1:12 MAX SLOPE).
 - WALKWAY - 1:20 SLOPE MAX WITH RAILING.
 - COMPLY WITH TAS REGULATIONS.

DAY-CARE
11,530 GROSS SF
ONE-STORY
FF = 801.75



1 SITE PLAN
SCALE: 1"= 20'-0"
PLAN NORTH
Pinnacle Freeman Properties, LLC
Called 9.602 Acres
Document Number 2017064436
O.P.R.W.C.

#	DATE	COMMENTS



PROJECT
PINNACLE SHELL RETAILS GEORGETOWN
2601 W. UNIVERSITY AVENUE
GEORGETOWN, TX 78628

PROJECT #
PMA051

OWNER

PINNACLE FREEMAN PROPERTIES, LLC
811 S. CENTRAL EXP. WAY
RICHARDSON, TX, 75080

SHEET TITLE:
SITE PLAN
SHEET NO.
A1.0
ISSUE DATE: OCTOBER 10-25-24